



MTI BASICS®



Freestanding Tubs

MTI BASICS® tubs are the perfect solution when needs are more simple and desires more modest. This selection includes a variety of tubs in the most popular shapes and sizes at a very affordable price.



MBXFSX5832A



MBXFSX5832A
58" x 32" x 22"
Features an integrated deck for mounting faucetry and is designed for above-floor rough-in.



Above-floor rough-in shown with optional quick-connect drain.



MBXFSX5832C



MBXFSX5832C
58" x 33" x 22"
Features an integrated deck for mounting faucetry and is designed for above-floor rough-in.



MBOFS6636



MBOFS6636
66" x 37" x 22"

MBOFS6636A
66" x 36" x 22"
Same as above but with a shallower bowl for above-floor rough-in.



MBOFSX6636



MBOFSX6636
66" x 37" x 22"
Features an integrated deck for mounting faucetry.

MBOFSX6636A
66" x 37" x 22"
Same as above but with a shallower bowl for above-floor rough-in.



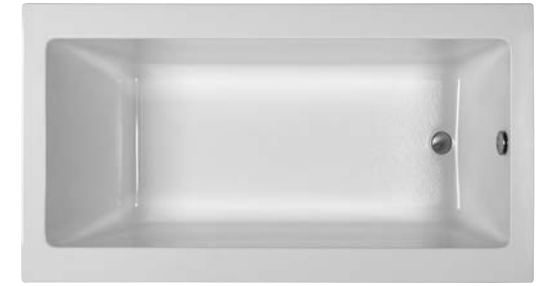
MBLX6032



MBLX6032 60" x 32" x 22"
MBLX6636 67" x 36" x 24"



MBCRFS6632



MBCRFS6632
66" x 32" x 20"



MBTRFS6636



MBTRFS6636 66" x 36" x 23"



MBRFSX6636



MBRFSX6636
66" x 36" x 23"
Features an extended deck
for mounting faucetry.
MBRFSX6636A
66" x 36" x 23"
Same as above but with a shallower
bowl for above-floor rough-in.

Rectangular Drop-in Tubs



MBCR6632



MBRX7248E



MBRX7248E
71" x 47" x 20"



MBCR6032 60" x 32" x 20"
MBCR6632 66" x 32" x 20"
MBCR6636 66" x 36" x 21"
MBCR7242 72" x 42" x 20"

Above models can also be undermounted.



MBRR6030E 60" x 30" x 17"
MBRR6032E 59" x 32" x 19"
MBRR6036E20 60" x 36" x 20"
MBRR6630E 66" x 30" x 19"
MBRR6634E 66" x 34" x 20"



MBCR7242C 72" x 42" x 22"

Can also be undermounted.



MBRR7136E 71" x 36" x 19"



MBRX6048E21



MBRX6048E21
60" x 48" x 21"



MBRO6042E



MBRO6042E 60" x 42" x 19"
MBRO7142E 71" x 42" x 19"
MBRO7236E 72" x 36" x 20"



MBRO7142C 71" x 42" x 19"



MBRO6036E 60" x 36" x 19"



MBTR6636

Corner Drop-in Tubs



MBOC6060



MBTR6636 66" x 36" x 21"
MBTR7240 72" x 40" x 21"



MBSC6060
 59" x 59" x 19"



MBOC6060
 59" x 59" x 21"

Oval Drop-in Tubs



MBODI6636



MBODI6036 60" x 36" x 19"
MBODI7236 73" x 36" x 23"



MBODI7042 69" x 42" x 20"



MBODI6042 60" x 42" x 22"



MBODI6636A 66" x 36" x 17"

Integral-Skirted Tubs



MBISC6030 A/D 60" x 30" x 19" / 16"
MBISC6032 A/D 60" x 32" x 19" / 16"
MBISC6036 A/D 60" x 36" x 19" / 16"

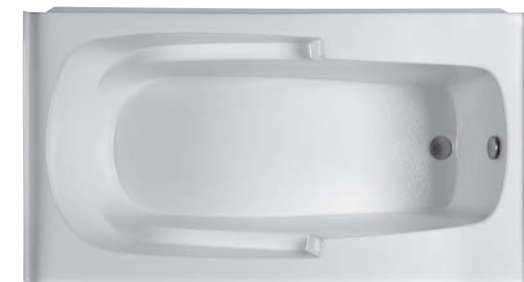
The MBISC models are available in two different heights:
 ♦ 19" height allows for an above floor rough-in (AFR)
 ♦ 16" height complies with ADA regulations (ADA)



MBIS7236 (shown) 72" x 36" x 21"
MBIS7242 72" x 42" x 21"



MBIS6030 (shown) 60" x 30" x 19"
MBIS6036 60" x 36" x 20"



MBIS6032 (shown) 60" x 32" x 19"
MBIS6042 60" x 42" x 20"



MBIS6030
 Shown with non-removable panel for soakers. This front skirt design above applies to the 6 MBIS models shown here. The MBISC models have a flat, non-removable skirt.

Standard Features and Options

All Baths

- ◆ Durable high-gloss Acrylic CXL™.
- ◆ White standard; biscuit upgrade.
- ◆ Bath reinforcement consisting of a thick layer of fiberglass / titanium / resin, plus 1/2" metal reinforcement on all sides of rectangular and corner tubs.
- ◆ Textured bottom meets ASTM F-462-1994 slip resistance.
- ◆ 2-year residential warranty. 1-year commercial warranty.

Additional For Whirlpools

- ◆ Directionally-adjustable point-massage jets.
- ◆ 1-bhp whisper-quiet pump with silent air volume control.
- ◆ Left- or right-hand pump locations available on center drain and corner tubs.

Additional For Air Baths

- ◆ 3/4 bhp heated blower with automatic purge system that activates 20 minutes after use.
- ◆ 12 low-profile air jet distribution ports are installed on the tub floor with color-matching air caps.
- ◆ Check valves in jets prevent water from entering air lines.
- ◆ Pre-leveled foam base.

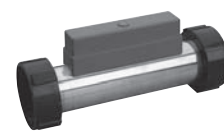
Additional For Integral-Skirted Tubs

- ◆ Integral tile flange on 3 sides.
- ◆ Left- or right-hand drain configuration (must specify when ordering).
- ◆ Front panel is removable for whirlpools and air baths, except MBISC models.

Freestanding Tubs

- ◆ Available as a soaker only.
- ◆ Can be configured with a Virtual Spout integrated high-flow tub filler.
- ◆ Access panel included to facilitate drain or Virtual Spout installation.
- ◆ Tub may also be specified without a panel.
- ◆ Select models include an integral faucet deck.

Tub Options



Inline Heater

650-watt heater maintains bath water temperature at 104°. Available for whirlpools, air baths* and soakers*, except freestanding. *Requires a low-force, recirculating pump for operation.



Pre-Leveled Foam Base

High-density foam support is standard with air baths and pre-leveled frame systems. Adds 2"-3" to overall tub height, except for integral-skirted models.

Pre-Leveled Frame System

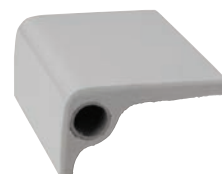
Hardwood constructed frame simplifies the installation process. Includes high-density foam that supports the bottom of the pre-leveled bath. Shown with optional skirting.



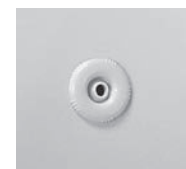
Tile Flange

Chemically bonded to the tub, which ensures a water-tight seal between the top tub surface and surrounding wall area. Integral tile flange is also available on most models.

PLEASE NOTE: Designer Collection tub options do not apply to BASICS tubs.



Cutaway of bath reinforcement



Whirlpool Jet



Air Jet Cap



Integral skirt



Access Panel



Virtual Spout

Kitchen Sinks



MTI BASICS® includes an assortment of kitchen sinks. Manufactured in high-gloss Acrylic CXL, MTI BASICS sinks are attractive, scratch- and stain-resistant and easy to clean.

This selection of products can help when the circumstances and applications are value-sensitive. You can get the function you need in a form you will like. Products shown include a 1-year residential and commercial warranty.

Available in white or biscuit

One-Piece Construction with Apron



MBKS234
33" × 22" × 8" (L / R)

Shown with optional stainless steel grids



MBKS244
25" × 22" × 6"



MBKS254
33" × 22" × 9"

Optional stainless steel grid available

Drop-in / Undermount



MBKS50
33" × 22" × 9"

Shown with optional stainless steel grid



MBKS30
33" × 22" × 8" (L / R)

Optional stainless steel grids available



MBKS40
25" × 22" × 9"

MTI's Walk-in Tub A Specialty Bath

There is a large, ever-growing segment of the American population, age 50 and over, who intend to remain in their homes for as long as they possibly can, living comfortably and independently.

Over time needs may change and requirements may become more specific, such as those resulting from mobility factors. Should this need arise, MTI's Walk-In Tub is designed to sensitively accommodate those who are mobility-challenged.

MTI's walk-in tub is available with a number of different hydrotherapies, combination packages and options. So if it is a walk-in tub that is needed, MTI goes beyond with the right product and features, and at the right price.



Shown as a right-hand drain configuration with valve package



Inside view of tub



Optional extension panel to fit 60" openings



MBWI5030 52" x 30" x 38"

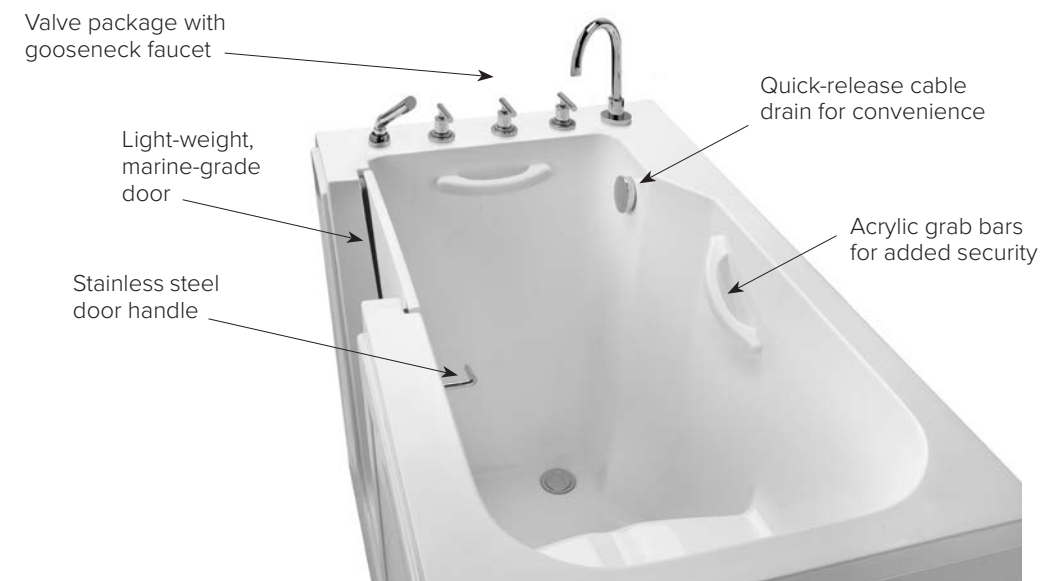
Features

- ♦ Welded steel frame with adjustable leveling "feet" for stability
- ♦ Slip-resistant textured bottom
- ♦ 2 acrylic grab bars for security
- ♦ Fast drain for convenience
- ♦ Light-weight, easy-to-latch door for ease of operation

Measuring 52" x 30" x 38", the Walk-In Tub is available with optional matching end panels or an extension panel to finish-off a full 60" width opening.

NOTE: Please specify left- or right-hand drain location when ordering.

Standard Features and Options



Soaker

- ♦ Constructed with Acrylic CXL and multiple layers of marine-grade gelcoat with a backing of fiberglass / titanium / resin.
- ♦ White only.
- ♦ Stainless steel structural frame with 6 leveling feet.
- ♦ Front removable acrylic panels for equipment access if necessary.
- ♦ Left- or right-hand drain location (must specify when ordering).
- ♦ Light-weight marine-grade door with easy-to-latch stainless steel hardware.
- ♦ 2 acrylic grab bars for security.
- ♦ Quick release cable drain included in chrome, plus door safety drain.
- ♦ 2-year residential warranty, 1-year commercial warranty.

Microbubbles - includes all of the soaker features plus:

- ♦ 1 microbubbles infusion port and pump.

Whirlpool - includes all of the soaker features, plus:

- ♦ Six directionally-adjustable point-massage jets.
- ♦ 1-bhp whisper-quiet pump with silent air volume control.

Air Bath - includes all of the soaker features, plus:

- ♦ Twenty low-profile air jets are installed around the side walls of the bathing well with color-matching air caps. Each jet has an independent check valve to prevent water and residue from entering the air lines.
- ♦ 3/4-bhp heated blower with automatic purge that dries the air jets 20 minutes after use.

Combination Packages

- ♦ Air bath and whirlpool
- ♦ Air bath and microbubbles

THE PACKAGES TO THE LEFT ARE AVAILABLE WITH EITHER OR BOTH OF THE FOLLOWING:

Factory-Installed Valves

- ♦ Gooseneck spout in polished chrome finish.
- ♦ Matching Roman tub hot and cold levers.
- ♦ Deck-mounted hand-held shower with diverter.

Radiance®

- ♦ Radiance® is a tub surface heating system designed to warm the interior surface of the tub.
- ♦ Radiance utilizes electric heating grids for the backrest area and seat of the tub. Grids are integrated in the tub structure.
- ♦ Low-voltage design. Uses energy equivalent to a standard light bulb. Designed to remain on at all times to ensure a warm surface during entry and throughout the bathing process.

WALK-IN TUB OPTIONS

- ♦ Inline heater
- ♦ Tile flange
- ♦ Matching end panel
- ♦ Extension panel to accommodate a 60" opening



MTI Baths
Sugar Hill, GA 30518
800.783.8827
mtibaths.com



Made in
the USA

© Copyright 2021 by MTI Baths, Inc.
Modification Rights Reserved.
Printed 11/21 in the USA